



INNOVA
INTERNATIONAL
ENGLISH SCHOOL

SCHOOL UNIFORM HANDBOOK / POLICY

AY 2023/2024

Uniform Policy

At IES we pride ourselves in being smart, well presented and ready for learning.

It is our school policy that all children wear school uniform when attending school, or when participating in school-organised events outside normal school hours. We ask children to wear their shirts tucked into their skirts, shorts or trousers and to take a pride in their personal appearance.

School uniform items can be bought from our school uniform shop. A complete list of the items needed for school uniform including those for Physical Education (P.E.) is listed in the next pages.

(P.E. uniform should only be worn during the days when your child has P.E.)

Aims and Objectives

Our policy on school uniform is based on the belief that we are pleased to wear a uniform that:

- Promotes a sense of pride in our school
- Helps to create a sense of community and belonging towards the school
- Identifies pupils with the school
- Prevents pupils from wearing 'fashion clothes' that could be distracting in class
- Is practical, smart, and designed with health and safety in mind

Jewellery, Hair Ornaments, Make-up and Nail Varnish

For many reasons, including safety, we do not allow children to wear jewellery. The exceptions to this rule are ear-ring studs in pierced ears.

Hair bands, ribbons/bows or 'scrunchies' should be plain and either black grey, white or yellow to match our school uniform colour. Hair bands should not have large flowers or other decoration attached.

Make up and nail varnish should not be worn to school.

Footwear

For health and safety reasons we **do not allow** children to wear shoes with:

- Platform soles or high heels
- Wheels
- Lights
- Sounds or music

All children are required to wear plain black school shoes without logos as stated in the uniform list.

Plain black or white trainers should be worn on P.E. days only.

Backpacks

Students may choose their own style of backpacks and lunchboxes as long as it is appropriate in size and serves their purpose.

Trolley / Wheeled bags are not allowed.

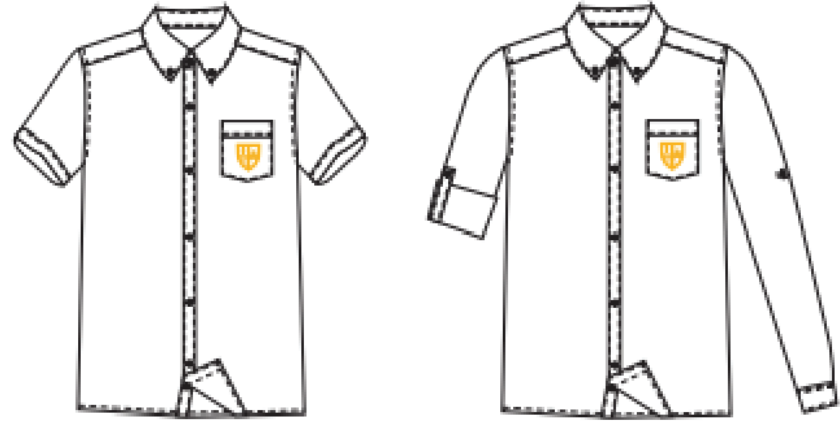


The Role of Parents

We believe that one of the responsibilities of parents is to ensure that their child has the correct uniform and P.E. kit, and that it is clean, in good repair and that the **child's name is visibly labelled on all items.**

Children who arrive at school wearing non-school uniform clothing will be loaned an appropriate item from our lost property to wear for that day if possible. The same system will apply for children who do not have a P.E. kit. Parents will be contacted to discuss the matter.

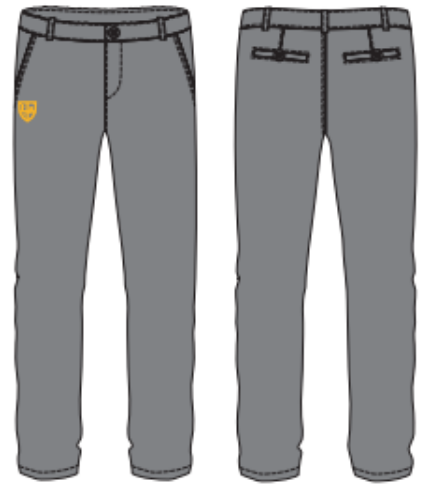
Secondary Girls Uniform (Y7-Y10)



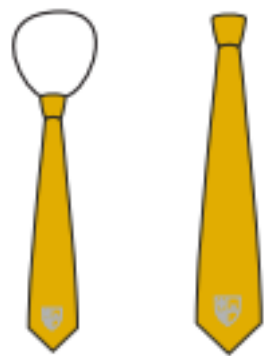
White buttoned shirt with school logo
(short / long sleeved)



Grey skirt with school logo



Grey trousers with school logo



Mustard yellow tie
with school logo

Elasticated for younger students, standard for older students

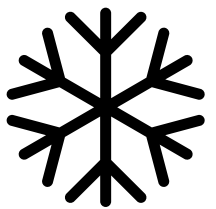


Grey blazer with school logo



Mustard yellow cardigan with school logo

WINTER
ONLY



Plain black school shoes
(NO TRAINERS / SPORT SHOES)



Grey / white / black
Socks or tights



Yellow / white / black
Hair accessories

Hijab Girls Uniform



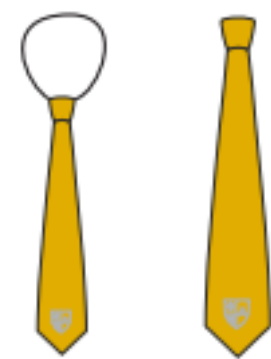
White buttoned shirt with school logo
(long sleeved)



Grey blazer with school logo



Grey trousers with school logo

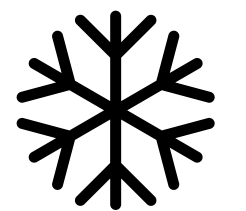


Mustard yellow tie
with school logo

Elasticated for younger students, standard for older students



WINTER
ONLY



Mustard yellow cardigan with school logo



Plain black school shoes
(NO TRAINERS / SPORT SHOES)



Grey / white / black
Socks



White / grey Hijab scarves

EYFS & Primary Girls Uniform (PreK-Y6)



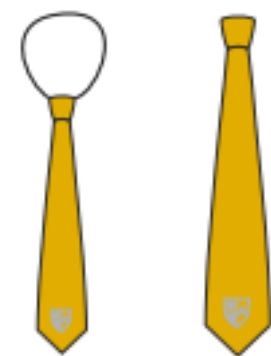
White buttoned shirt with school logo
(short / long sleeved)



Grey skirt with school logo



Grey blazer with school logo



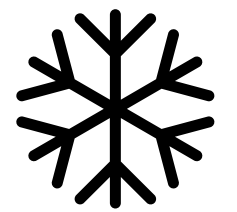
Mustard yellow tie
with school logo

Elasticated for younger students, standard for older students



Mustard yellow cardigan with school logo

WINTER
ONLY



Plain black school shoes
(NO TRAINERS / SPORT SHOES)



Grey / white / black
Socks or tights



Yellow / white / black
Hair accessories

Secondary Boys Uniform (Y7-Y10)



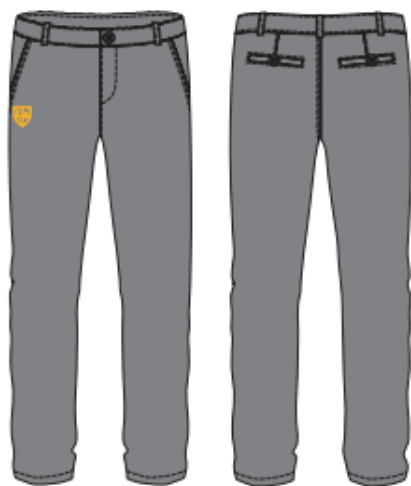
White buttoned shirt with school logo
(short sleeved)



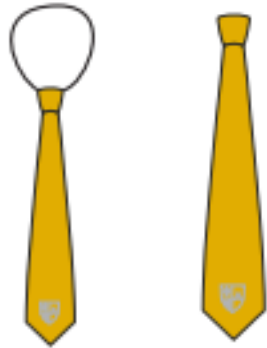
White buttoned shirt with school logo
(long sleeved)



Grey blazer with school logo



Grey trousers with school logo



Mustard yellow tie
with school logo

Elasticated for younger students, standard for older students



WINTER
ONLY



Mustard yellow jumper with school logo



Plain black school shoes
(NO TRAINERS / SPORT SHOES)



Grey / white / black
Socks

EYFS & Primary Boys Uniform (PreK-Y6)



White buttoned shirt with school logo
(short sleeved)



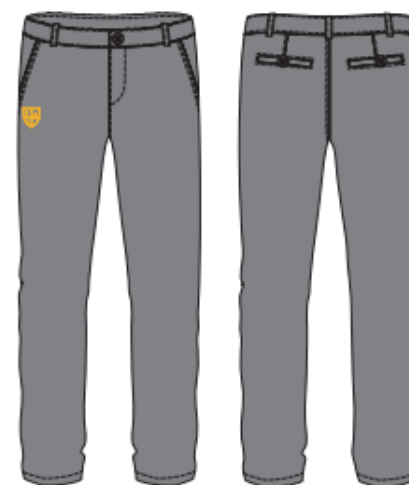
White buttoned shirt with school logo
(long sleeved)



Grey blazer with school logo



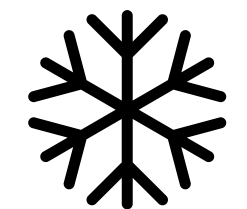
Grey short with school logo



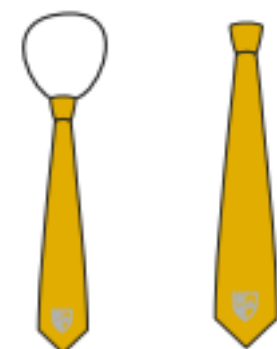
Grey trousers with school logo



WINTER
ONLY



Mustard yellow jumper with school logo



Mustard yellow tie
with school logo

Elasticated for younger students, standard for older students



Plain black school shoes
(NO TRAINERS / SPORT SHOES)



Grey / white / black
Socks

P.E. Uniform (Girls & Boys)

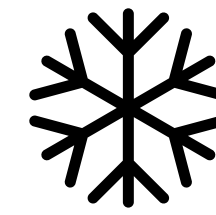


Grey sports shorts with school logo



Grey jogging trousers with school logo

WINTER ONLY

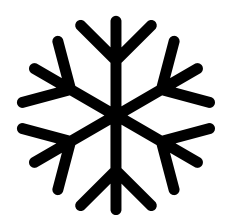


HIJAB ONLY



Grey hooded jacket with school logo

WINTER ONLY



Grey dry fit T-shirt with school logo



Plain white trainers
(NO wheels or lights or sound)



Grey / white / black
Socks

STUDENTS SHOULD ONLY WEAR P.E. UNIFORM DURING P.E. DAYS

Winter Coats

Winter coats can be worn over the school blazer during winter.

Winter coats may only be in the following colours:



Black



Grey



Mustard yellow



INNOVA
INTERNATIONAL
ENGLISH SCHOOL

Innovation is our identity.